



MAGNOLIA BAY VIEW

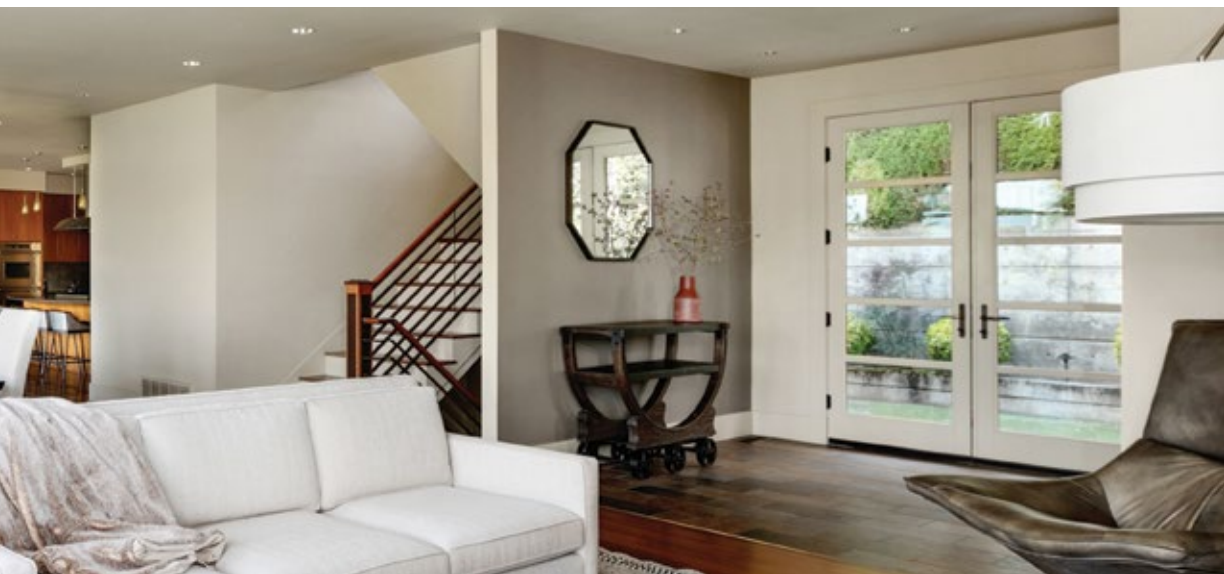




**NESTLED AGAINST THE NORTHEAST BORDER OF DISCOVERY PARK AND OVERLOOKING THE SERENITY OF SALMON BAY, THIS CONTEMPORARY HOME OFFERS A CALMING, LIGHT-FILLED URBAN REFUGE THAT IS AT ONCE BOTH COMFORTABLE AND LUXURIOUS.**

Completely shielded from the main road, a sculptural gate off the driveway leads to a private, enclosed garden with tasteful, low maintenance plantings. Under the arched entryway, paned glass double doors open to a slate landing that at once reveals a light-filled great room.

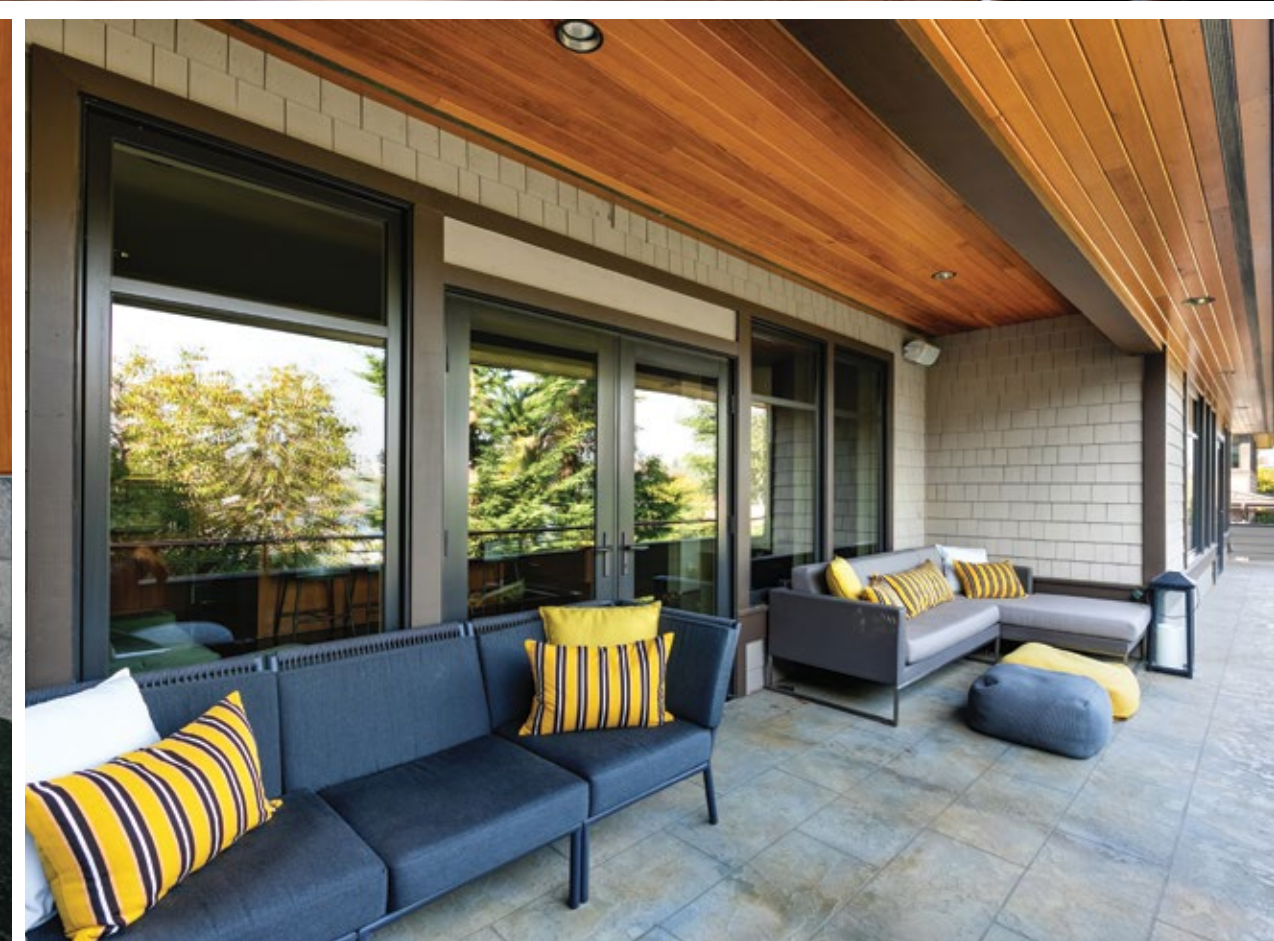




**A GRANDE OPEN CONCEPT LIVING AND DINING ROOM ARE IMMEDIATELY WARMED BY THE RICH TONES OF BRAZILIAN HARDWOODS.**

The main living area, defined by a gas fireplace surrounded by statement mantle in tones of cool gray and granite, flows seamlessly into the formal dining area. Beyond the wall of windows, idyllic views out to the bay, and an expansive deck that spans the length of the main floor, creates an ideal environment for entertaining or quiet enjoyment.





OFF THE GREAT ROOM, A GENEROUS AND LUXE GOURMET KITCHEN, CENTERED BY A GRANITE TOPPED ISLAND WITH SEATING SURROUND, IS WASHED IN LIGHT THROUGH AN EXPANSE OF WINDOWS.

Viking and Sub-Zero Appliances bring upscale luxury to the space and double sinks and thoughtful placement of a butler's pantry amplify usability and ease. Open to the family room, seating is extended outdoors through a set of French doors leading to the wrap around deck.



**UP THE STAIRS, THE MAIN SLEEPING QUARTERS ARE HIGHLIGHTED BY THE MASTER BEDROOM THAT OVERLOOKS SALMON BAY OVER THE TREETOPS.**

The en suite is a soothing sanctuary in light gray Silstone, and features a luxe walk in shower encased in glass and soaking tub underneath a wall of windows with views of the Salmon Bay Bridge. An enviable walk-in closet with center island and window seat complete the master wing. Ascending to the gabled uppermost level, a quaint seating area on the landing can be found underneath a lovely arched statement window. Two adequately sized bedrooms create additional sleeping quarters & and a full bathroom complete the top floor.







**THE LOWER LEVEL FEATURES A WELL-SIZED MEDIA ROOM WITH TILED FIREPLACE AND BUILT-IN STORAGE SURROUND.**

Brightened by a wall of windows, French doors provide access to the outdoors. An additional bedroom and full bath offer private accommodation for guests or possible ADU. A formal laundry and utility room provides additional utility.

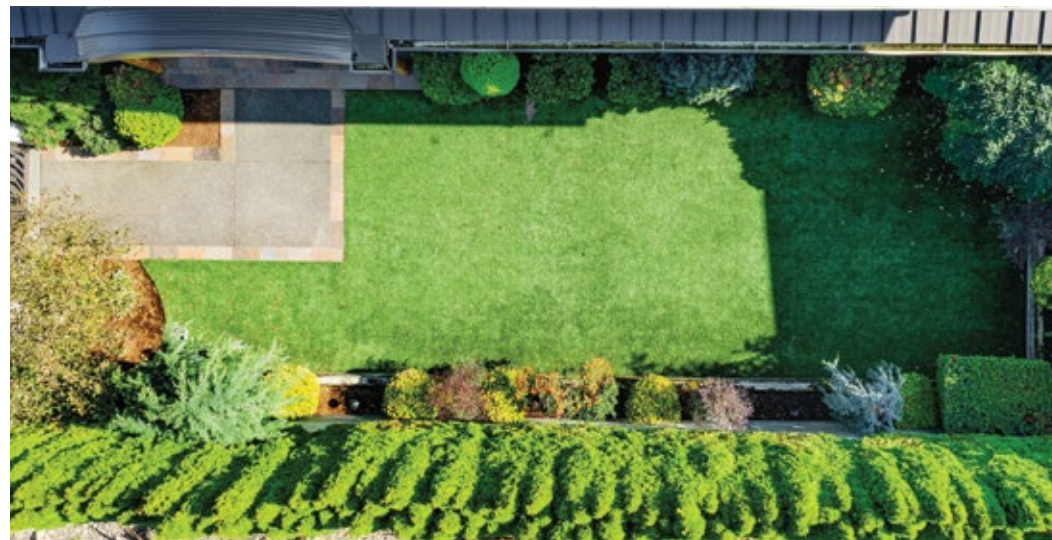




HERITAGEREALTY.COM/MAGNOLIA-BAY-VIEW



OFFERED AT 2.35M  
MLS: 1674076  
BEDROOMS: 4  
BATHS: 3.5  
SQ FT: 3,440  
LOT: 5,000  
PARKING: ATTACHED  
2-CAR GARAGE  
+ ELECTRIC CAR  
CHARGING STATION  
YEAR BUILT: 2007  
TAXES 2020: 18,304





HERITAGE

HERITAGE RESIDENTIAL, LLC



LANCE NEELY  
lance@heritagerealty.com  
206.854.2140

HERITAGEREALTY.COM